

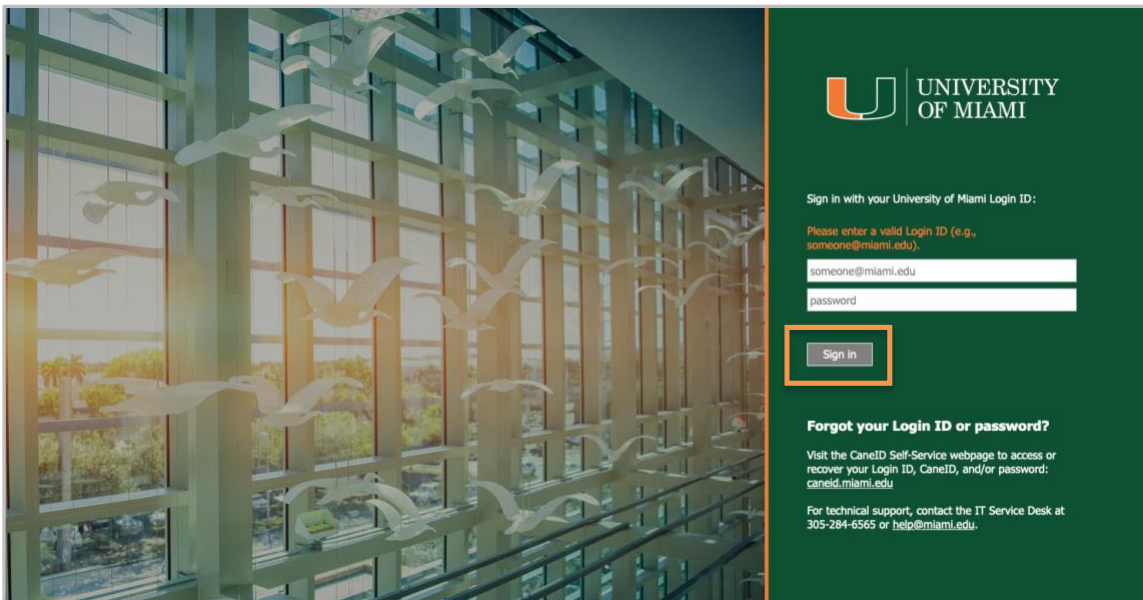
Microsoft Authenticator Enrollment Guide: New Enrollment in Microsoft Authenticator (Non-Duo User)



Enroll in Microsoft Authenticator for Android Devices (Smartphone/Tablet)

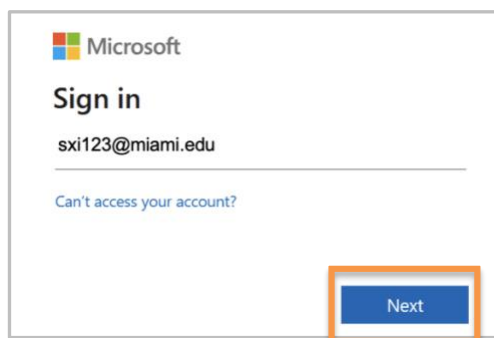
STEP 1

- **Verify your Login ID:** Visit CaneID Self-Service at caneid.miami.edu and click the "Login ID" banner to easily view your information.
- Visit any University of Miami-branded sign in website, e.g., **MyUM** (myum.miami.edu).
- Type your **Login ID** and password, then click **"Sign In."**



STEP 2

- You will be asked to sign in to Microsoft.
- Enter your University of Miami Login ID, then click **"Next."**

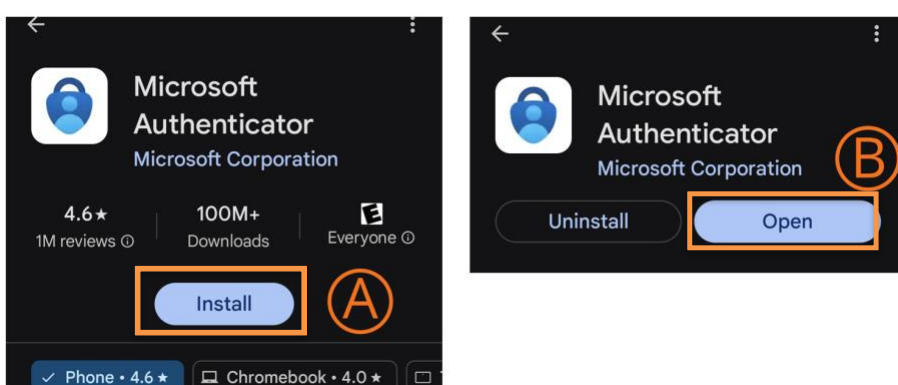


STEP 3

- Grab your mobile device. Use the camera to **scan the QR code below** and visit the [Play Store](https://play.google.com/store/apps/details?id=com.azure.authenticator).

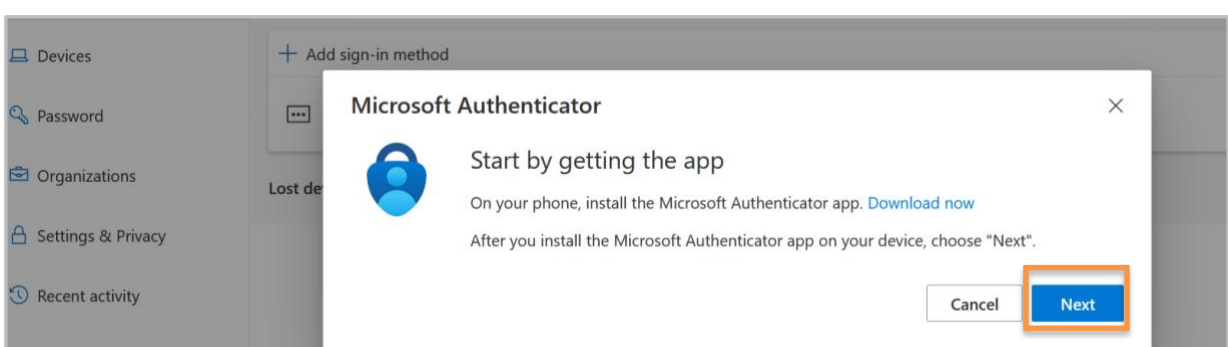


- Search for "Microsoft Authenticator" in the Play Store, then:
 - A. Tap the **download button**.
 - B. Select **"Open"** to launch the app.

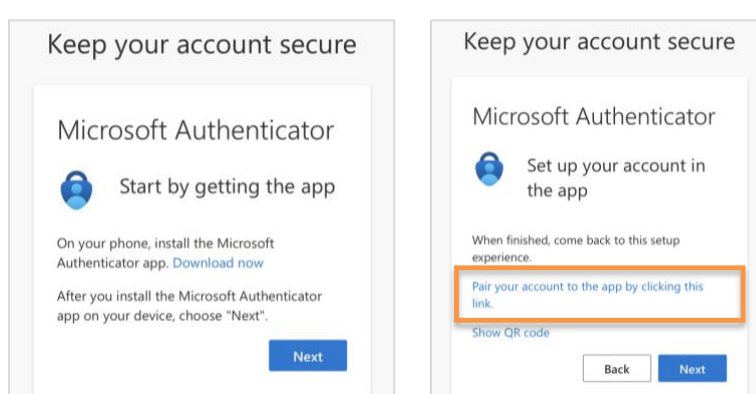


STEP 4

- Return to your computer screen* and click **"Next."**

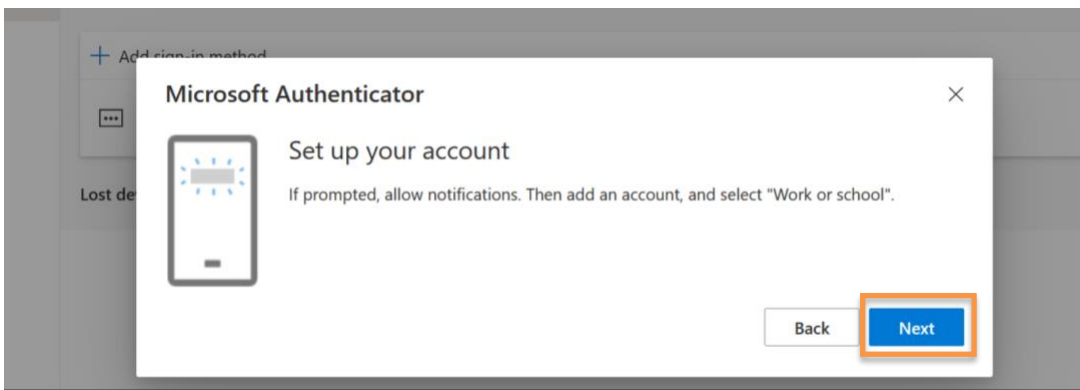


***Note:** If you are enrolling via your mobile device only, click **"Pair your account to the app by clicking this link."** on your mobile device, and then continue the enrollment process.



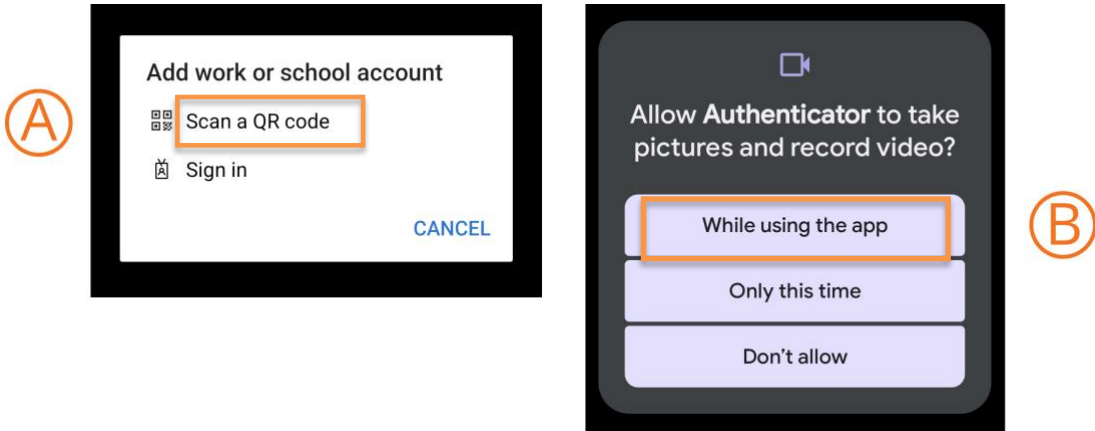
STEP 5

- Click **“Next”** on your computer screen.



STEP 6

- Open the Microsoft Authenticator app on your phone:
 - A. Choose **“Scan a QR code”**
 - B. Select **“While using the app.”**



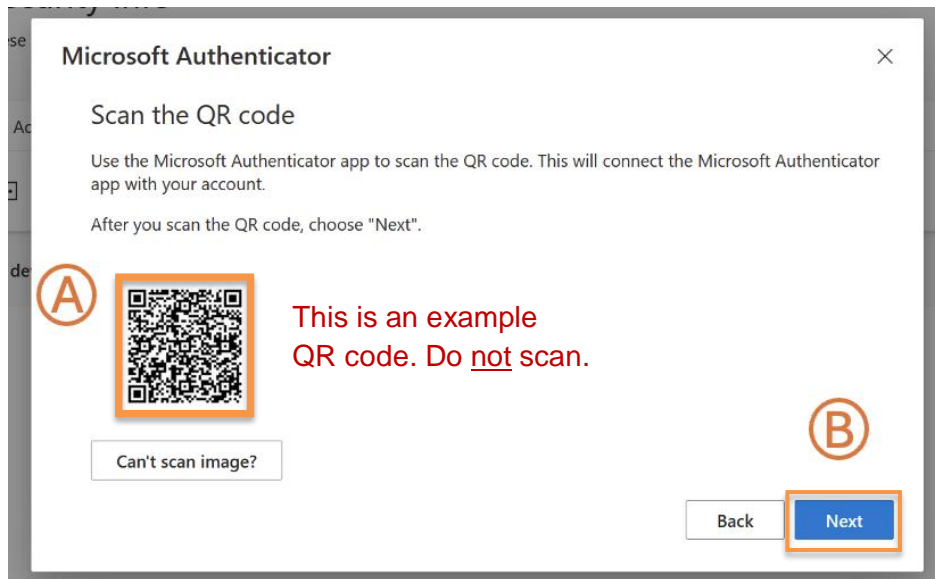
STEP 7

- Select **“Allow”** notifications on your mobile device when asked.

STEP 8

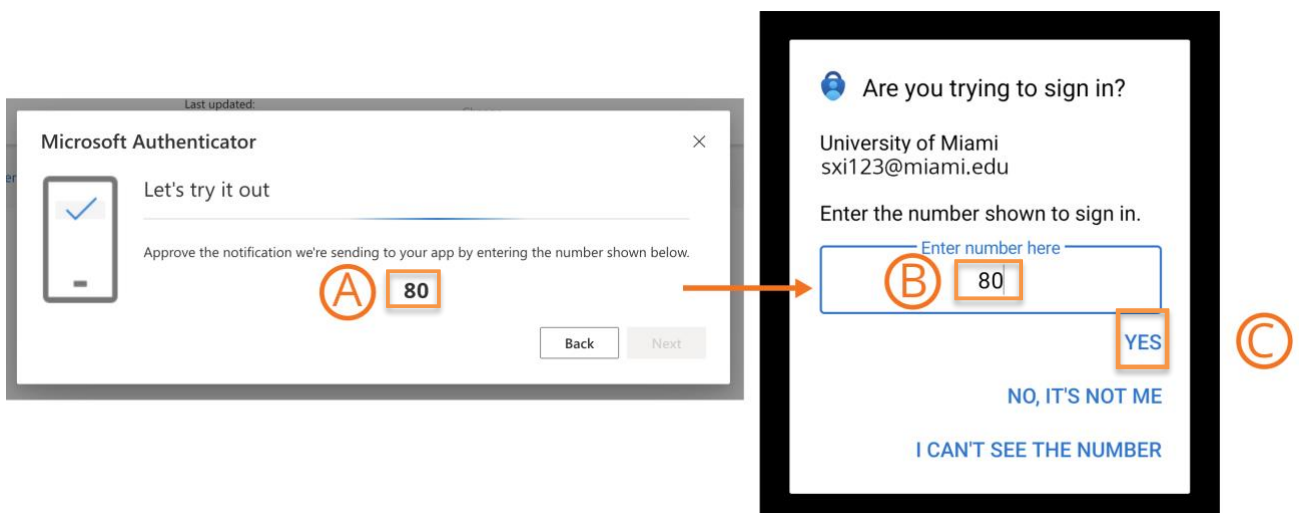
- In the Microsoft Authenticator app:
 - A. **Scan the QR code** on your computer screen* with the app’s built-in scanner.
Note: If you are enrolling via your mobile device only, click **“Pair your account to the app by clicking this link.” on your mobile device, and then continue the enrollment process.*
 - B. Click **“Next.”**

Note: The QR code below is an example only.



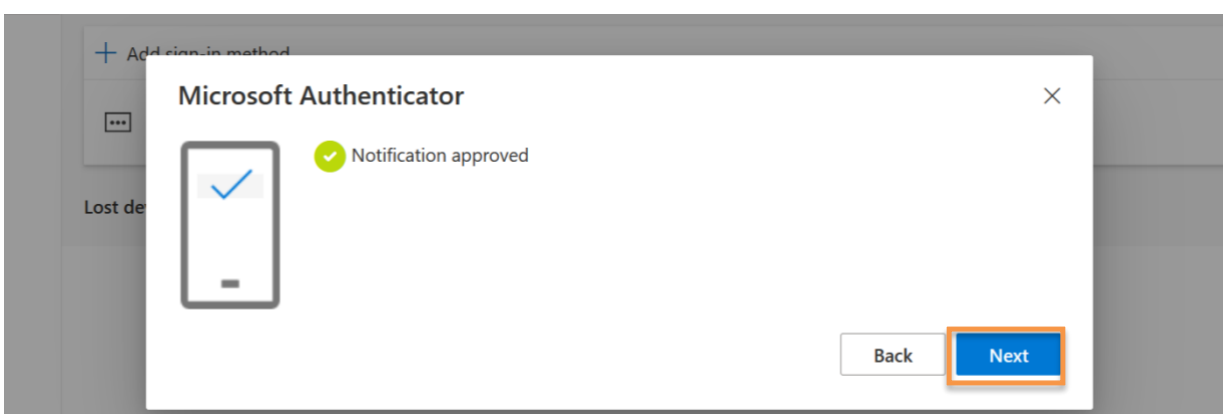
STEP 9

- Follow the prompts:
 - A. Look at number displayed on the computer screen.
 - B. Enter number into the Microsoft Authenticator mobile app.
 - C. Select **“Yes”** to complete.

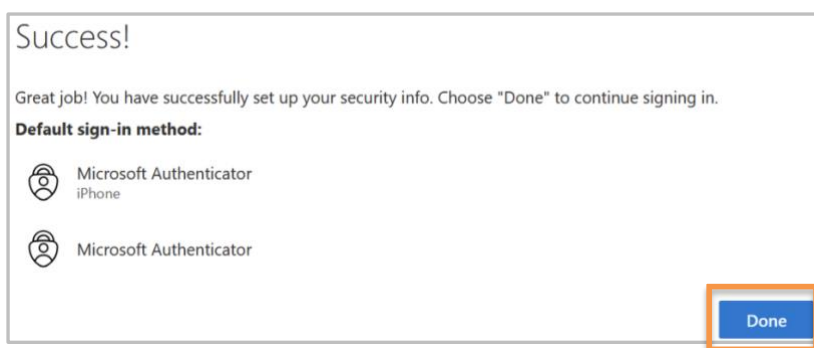


STEP 10

- Select **“Next”** on your computer.

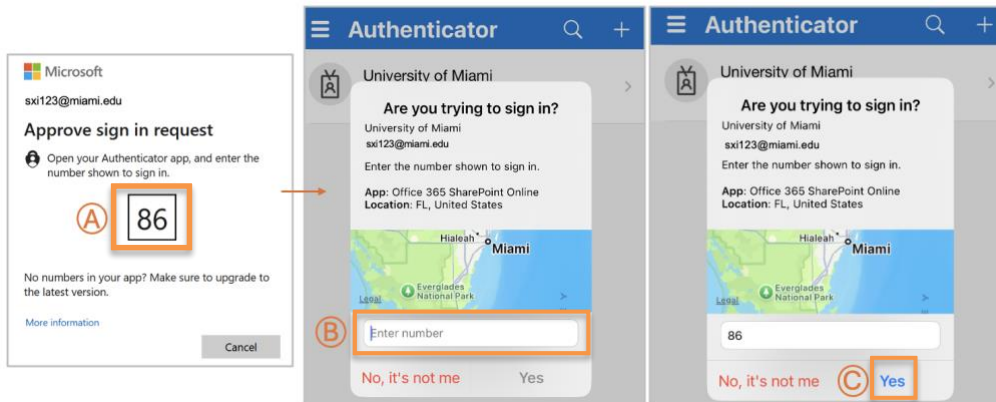


- In the *Success!* pop up, select **“Done.”**

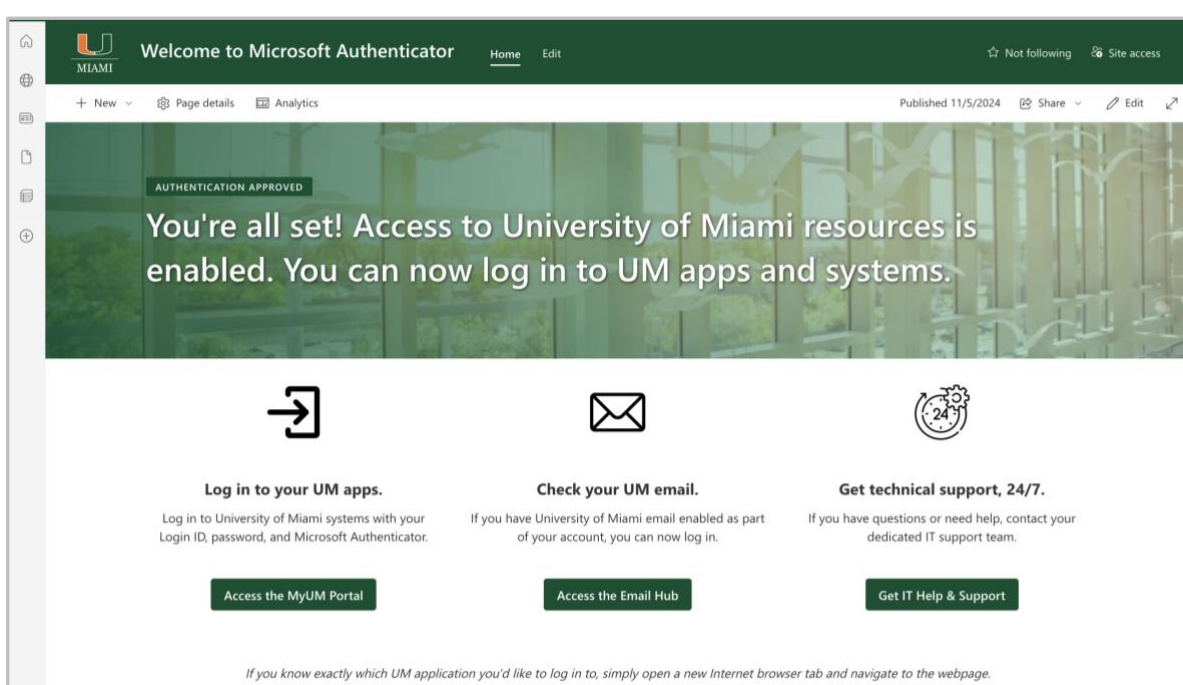


STEP 11

- To finalize the login process:
 - View the number that appears on your desktop computer.
 - Enter number into your Microsoft Authenticator mobile app.
 - Click **“Yes.”**
- You will be redirected to the Microsoft Authenticator landing page.



- You can now access University of Miami applications and systems with your Login ID, password, and the Microsoft Authenticator mobile app.



Add Another Device

If you would like to add a [hardware token](#) as an additional authentication method, please visit one of the convenient locations listed [here](#) and an IT specialist will enroll the hardware token in your Microsoft Authenticator account.

Technical Support

For technical support, please contact the IT Service Desk – Coral Gables/Marine: 305-284-6565 or help@miami.edu; UHealth/MSOM: 305-243-5999 or help@med.miami.edu.