

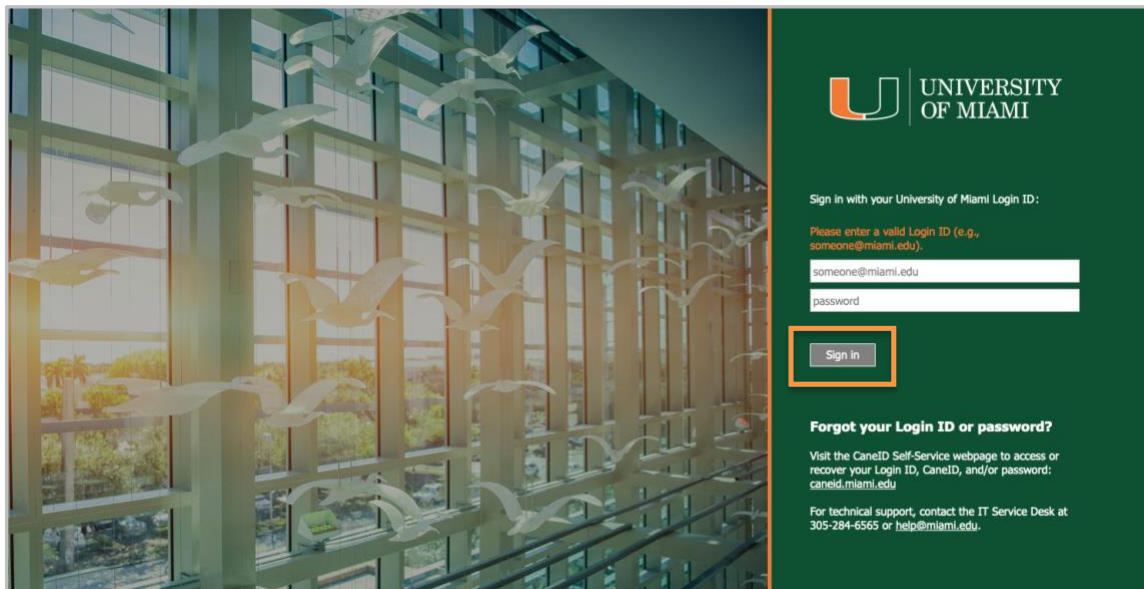
# Microsoft Authenticator Enrollment Guide: New Enrollment in Microsoft Authenticator (Non-Duo User)



## Enroll in Microsoft Authenticator for Apple Devices (iPhone/iPad)

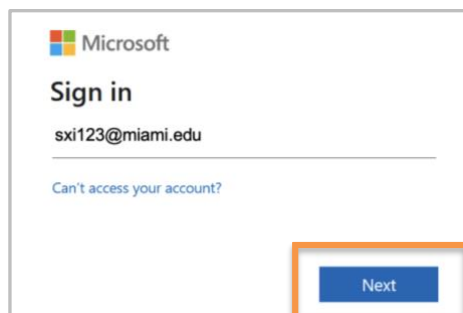
### STEP 1

- **Verify your Login ID:** Visit CaneID Self-Service at [caneid.miami.edu](https://caneid.miami.edu) and click the "Login ID" banner to easily view your information.
- Visit any University of Miami-branded sign in website, e.g., **MyUM** ([myum.miami.edu](https://myum.miami.edu)).
- Type your **Login ID** and password, then click **"Sign In."**



### STEP 2

- You will be asked to sign in to Microsoft.
- Enter your University of Miami Login ID, then click **"Next."**

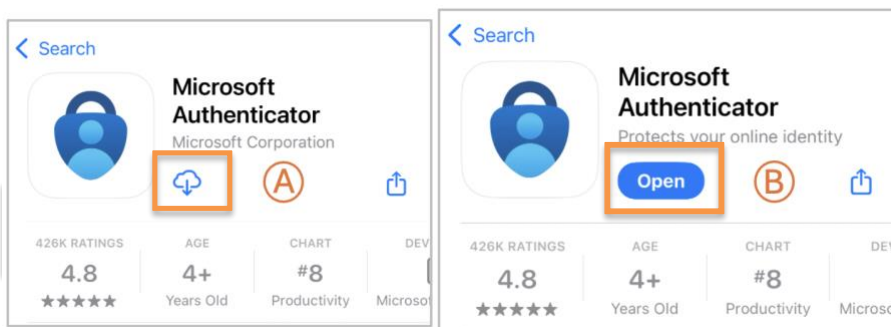


### STEP 3

- Grab your mobile device. Use the camera to **scan the QR code below** and visit the [Apple App Store](https://www.apple.com/app-store/).

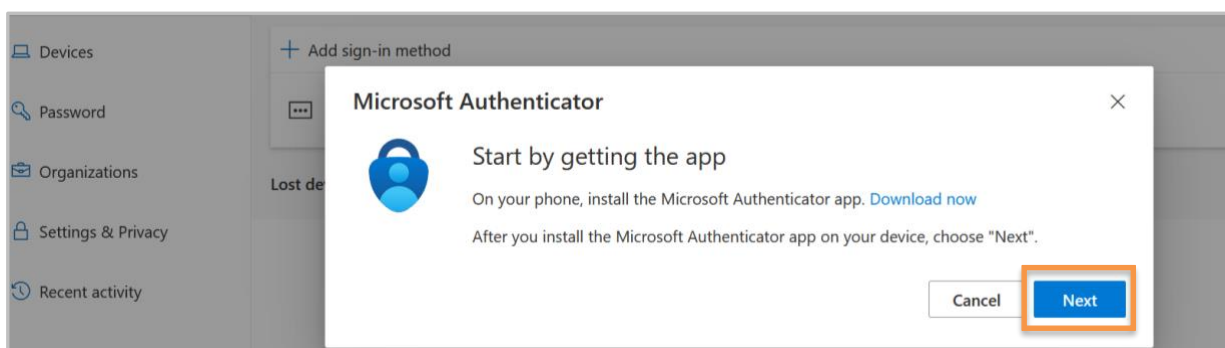


- Search for "Microsoft Authenticator" in the Apple App Store, then:
  - A. Tap the **download button**.
  - B. Select **"Open"** to launch the app.

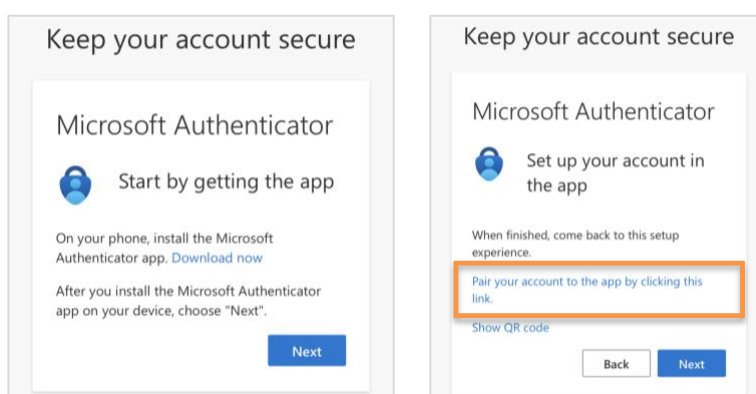


### STEP 4

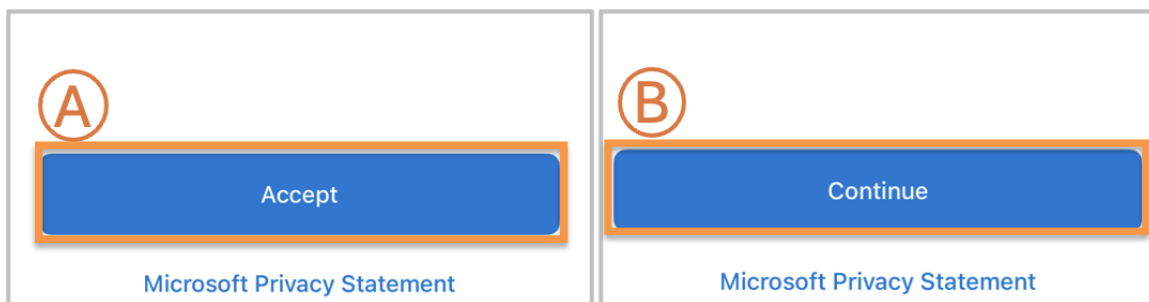
- Return to your computer screen\* and click **"Next."**



**\*Note:** If you are enrolling via your mobile device only, click **"Pair your account to the app by clicking this link."** on your mobile device, and then continue the enrollment process.

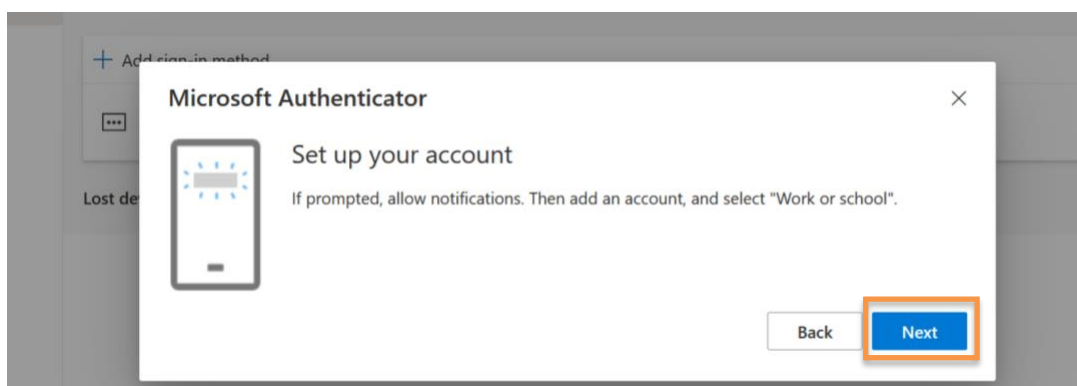


- In the Microsoft Authenticator app:
  - Click **“Accept”** to allow diagnostic data collection.
  - Then **“Continue.”**



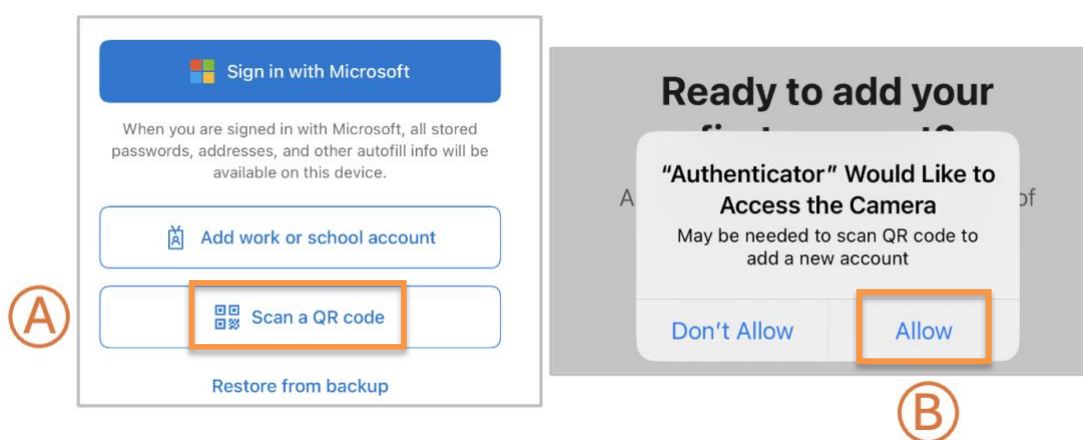
## STEP 5

- Click **“Next”** on your computer screen.



## STEP 6

- Open the Microsoft Authenticator app on your phone:
  - Choose **“Scan a QR code”**
  - Select **“Allow.”**



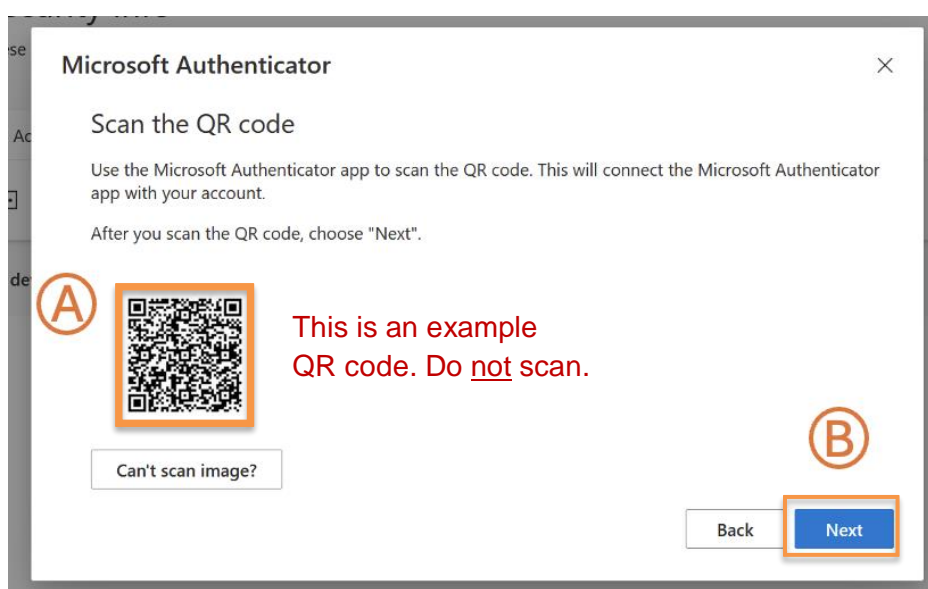
## STEP 7

- Select **“Allow”** notifications on your mobile device when asked.

## STEP 8

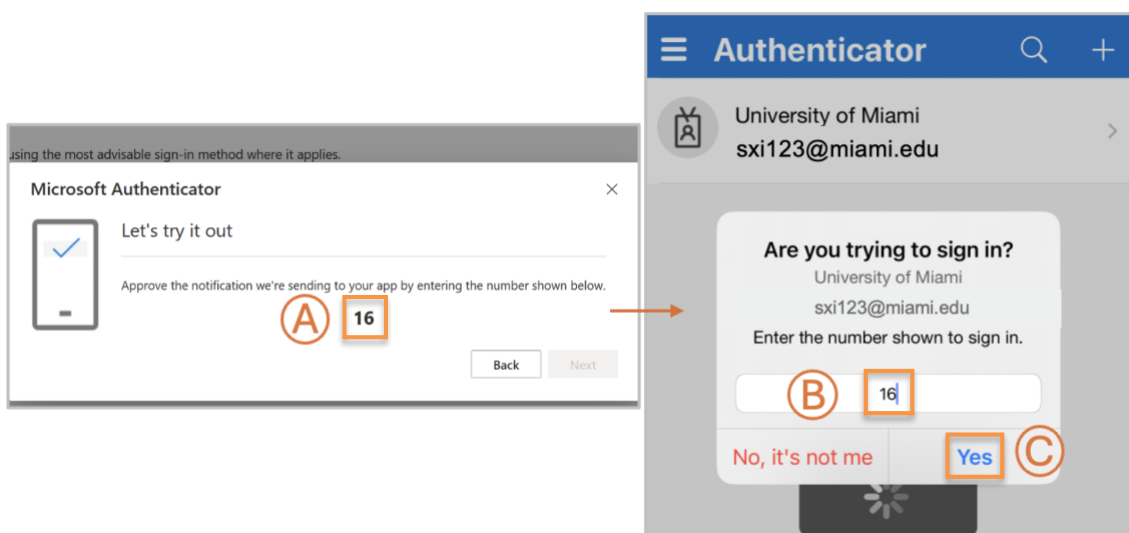
- In the Microsoft Authenticator app:
  - Scan the QR code** on your computer screen\* with the app’s built-in scanner. (\**Note:* If you are enrolling via your mobile device only, click **“Pair your account to the app by clicking this link.”** on your mobile device, and then continue the enrollment process.)
  - Click **“Next.”**

*Note:* The QR code below is an example only.



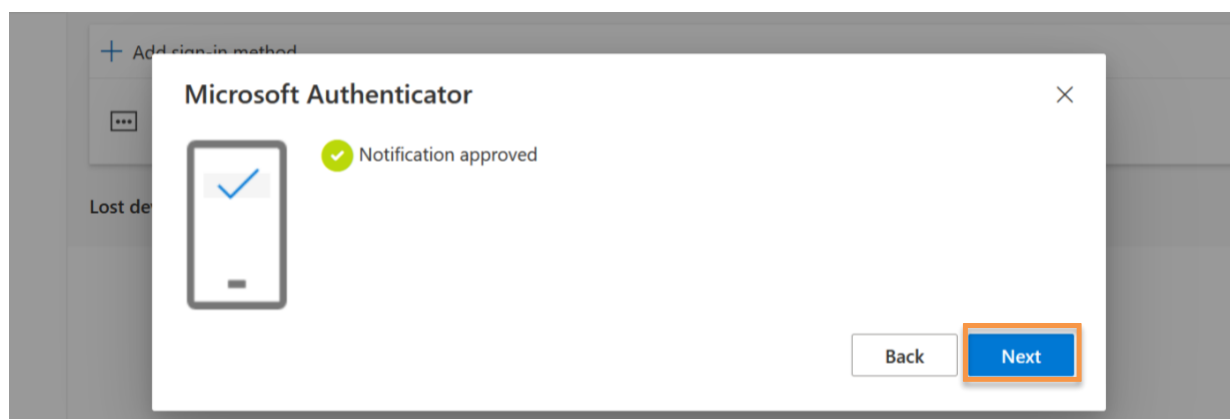
## STEP 9

- Follow the prompts:
  - Look at number displayed on the computer screen.
  - Enter number into the Microsoft Authenticator mobile app.
  - Select **“Yes”** to complete.

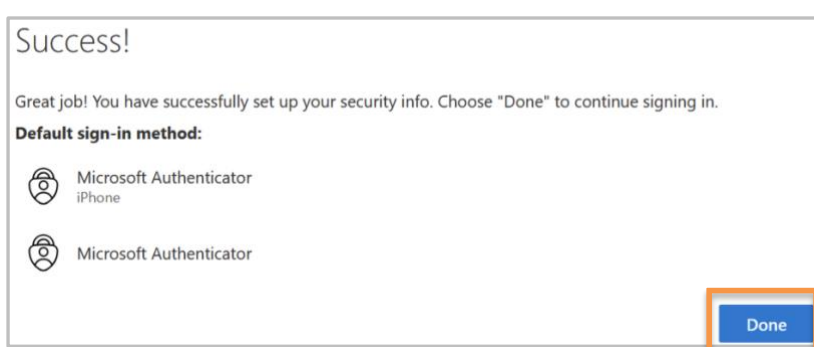


## STEP 10

- Select **“Next”** on your computer.

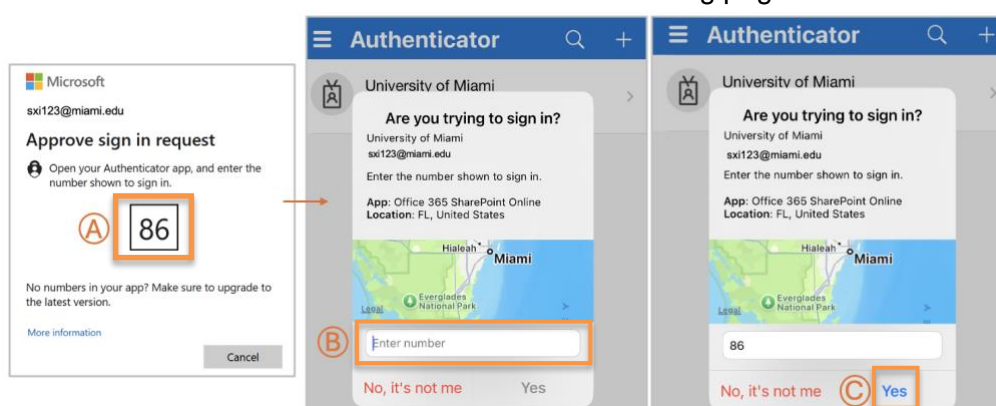


- In the *Success!* pop up, select **“Done.”**

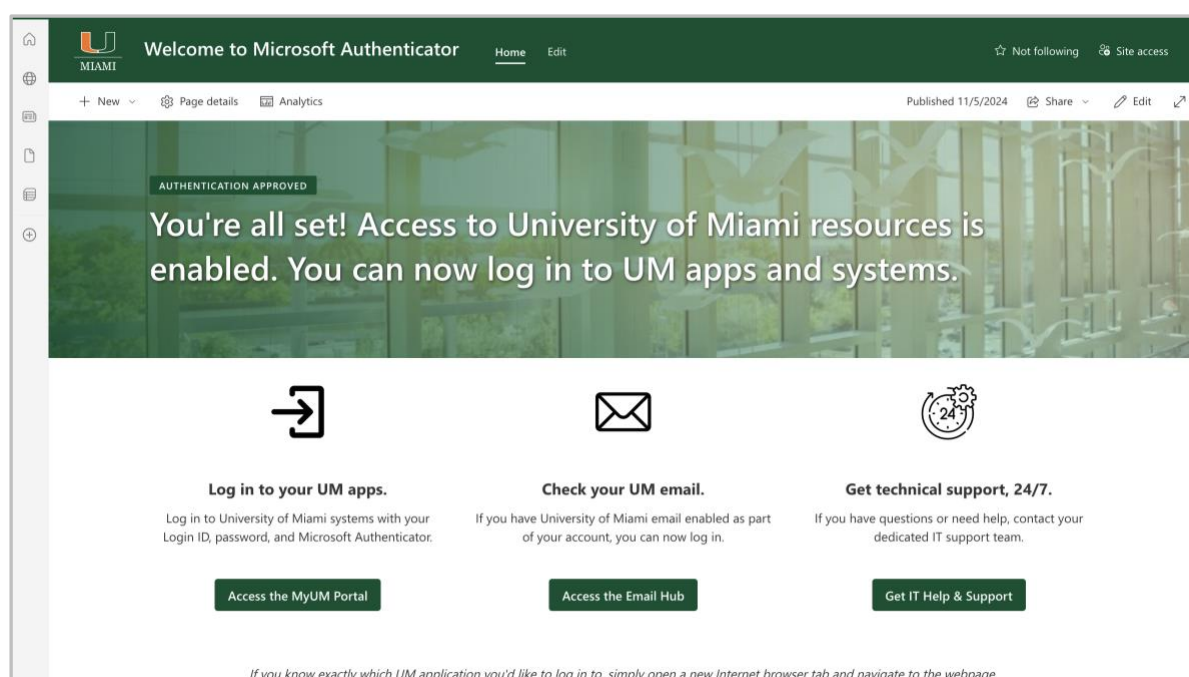


## STEP 11

- To finalize the login process:
  - A. View the number that appears on your desktop computer.
  - B. Enter number into your Microsoft Authenticator mobile app.
  - C. Click **“Yes.”**
- You will be redirected to the Microsoft Authenticator landing page.



- You can now access University of Miami applications and systems with your Login ID, password, and the Microsoft Authenticator mobile app.



## Add Another Device

If you would like to add a [hardware token](#) as an additional authentication method, please visit one of the convenient locations listed [here](#) and an IT specialist will enroll the hardware token in your Microsoft Authenticator account.

## Technical Support

For technical support, please contact the IT Service Desk – Coral Gables/Marine: 305-284-6565 or [help@miami.edu](mailto:help@miami.edu); UHealth/MSOM: 305-243-5999 or [help@med.miami.edu](mailto:help@med.miami.edu).